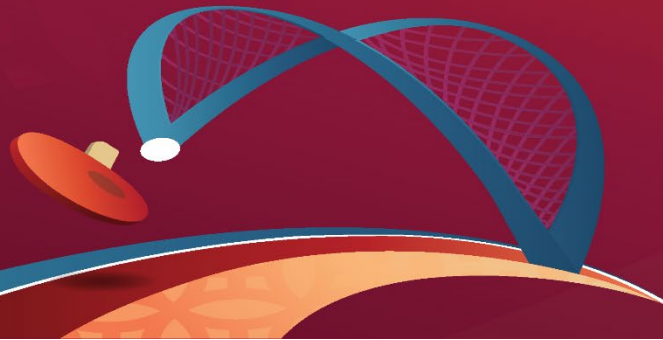




ITTF WORLD TABLE TENNIS
♦ CHAMPIONSHIPS FINALS ♦
DOHA 2025

17 - 25 MAY 2025
LUSAIL & QU SPORTS ARENA | DOHA, QATAR



What You Should Know Before Coming to the Arena

To ensure a safe, enjoyable, and well-organized experience for everyone attending the World Table Tennis Championship at Lusail Sports Arena, all spectators must adhere to the following rules and guidelines:

Gate Opening Time

May 17–20: Gates open **1 hour** before

May 21–25: Gates open **2 hours** before

Please arrive early to allow smooth entry and security checks.

Gate Entry Information

Lusail Multipurpose Hall

North Gate: Entry for **VIP, Category 1, Category 2** and **Category 3** ticket holders.

Gate 3: Entry for **VVIP Box** ticket holders.

<https://maps.app.goo.gl/NwJuKYaCfp3evCag7>

Qatar university sports complex

Building A07, Main Entrance: Entry for **Category 1, Category 2** and **Category 3**

<https://maps.app.goo.gl/dKDJTsk8YEKw8iX17>

Please follow signage and staff directions at the venue for smooth entry.

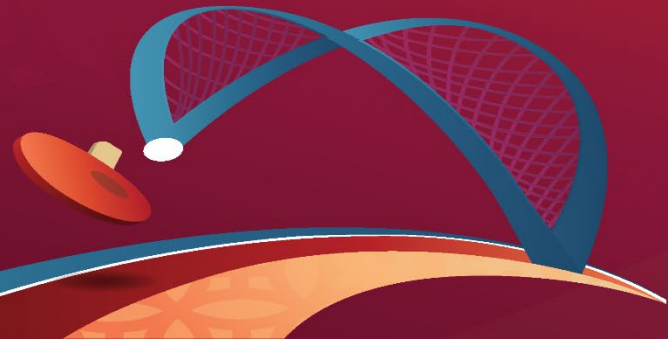
Re-entry Policy

Re-entry was not permitted. Once a guest exited the venue, re-admittance required a new ticket.



ITTF WORLD TABLE TENNIS
♦ CHAMPIONSHIPS FINALS ♦
DOHA 2025

17 - 25 MAY 2025
LUSAIL & QU SPORTS ARENA | DOHA, QATAR



Offline Ticket Booth Regulations

1. Booth Location & Accessibility

Ticket booth is located near the North gate

2. Operating Hours

During Competition Days:

Opening: 2 hours before the first match

Closing: After 1 hour of start of session 2

3. Purchase Regulations

Valid QID or Passport is required to purchase tickets.

Max 4 tickets per person per day

All adults and children (aged 5 and above) shall require a ticket for admission to the Venue. No resale or duplication of printed tickets permitted.

Tickets will go on sale **on the same day** and **one day advance only**

4. Payment Options

Credit/Debit Cards only

5. Ticket Categories

Categories 1,2,3, VIP and VVIP depends on availability

Full-day and single-session options

6. Ticket Booth Rules

Tickets are non-refundable

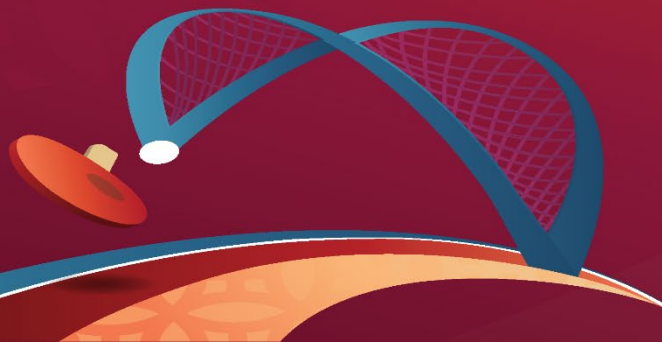
No ticket changes allowed after purchase

Screenshots of tickets are **not accepted** — please present the original digital ticket



ITTF WORLD TABLE TENNIS
♦ CHAMPIONSHIPS FINALS ♦
DOHA 2025

17 - 25 MAY 2025
LUSAIL & QU SPORTS ARENA | DOHA, QATAR



Prohibited Items at the Venue

Hazardous or Dangerous Items

Weapons (of any kind), knives, sharp/bladed objects
Explosives, fireworks, flares, smoke bomb
Items that can be thrown or used to harm (umbrellas, helmets, hard tools)
Martial arts gear, bulletproof vests, or protective armor
Items to conceal identity (except religious or medical)
Spray cans, flammable/corrosive substances
Glass, hard containers, or large thermal boxes
Inflatable balls, balloons, frisbees
Bicycles, skateboards, scooters
Oversized items (bags exceeding 75cm total dimensions)
Powdery substances (except small cosmetics)
Animals

Food, Drinks & Liquids

Alcohol
Outside food and beverages (unless for babies or medical reasons, with proof)
Illegal drugs or unauthorized medication
More than 7 different types of medicine per person

Flags & Offensive Items

Political, discriminatory, or offensive banners/apparel
Oversized flags (limit: 2m x 1.5m)
Flagpoles (except flexible ones < 1m length and 1cm diameter)
Commercial or promotional items not approved by organizers

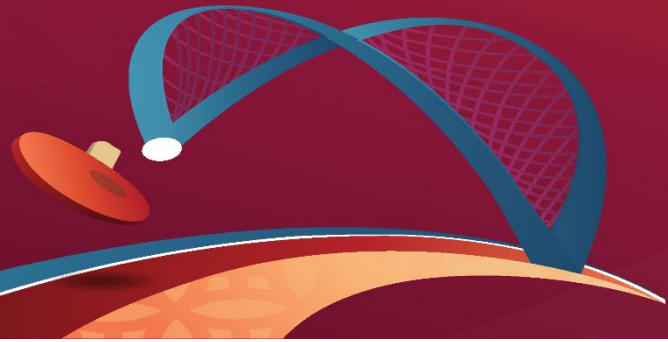
Electronics & Noise Devices

Musical instruments too large for X-ray scanner
Loud noise devices (vuvuzelas, whistles, speakers)
Laser pointers or led
Professional cameras or Live-streaming devices or broadcast-quality recording setups.
Lenses longer than 200mm or any telephone lenses
Tripods, selfie sticks, multiple batteries
Drones or remote-controlled aircraft
Binoculars (unless for visual disability with proof)
Audio-visual equipment that can interfere with broadcasting or security systems.



ITTF WORLD TABLE TENNIS
◆ CHAMPIONSHIPS FINALS ◆
DOHA 2025

17 - 25 MAY 2025
LUSAIL & QU SPORTS ARENA | DOHA, QATAR



Refunds, Credits, and Replacements Policy

Please note that **refunds, credits, or ticket replacements will NOT be provided** under the following circumstances:

- a) The ticket was issued free of charge (complimentary).
- b) The schedule of your session changes, but a match still takes place (either fully or partially).
- c) The schedule of your ticketed session is modified (e.g., change of timing or players), but the session still occurs.
- d) Any changes or cancellations related to general entertainment around the venue (e.g., performances or fan zone activities) do not qualify for compensation.
- e) Your view is restricted due to event equipment, other spectators, staff presence, or necessary infrastructure.
- f) You choose not to attend your session for personal reasons (e.g., change of mind, personal commitments, travel issues).